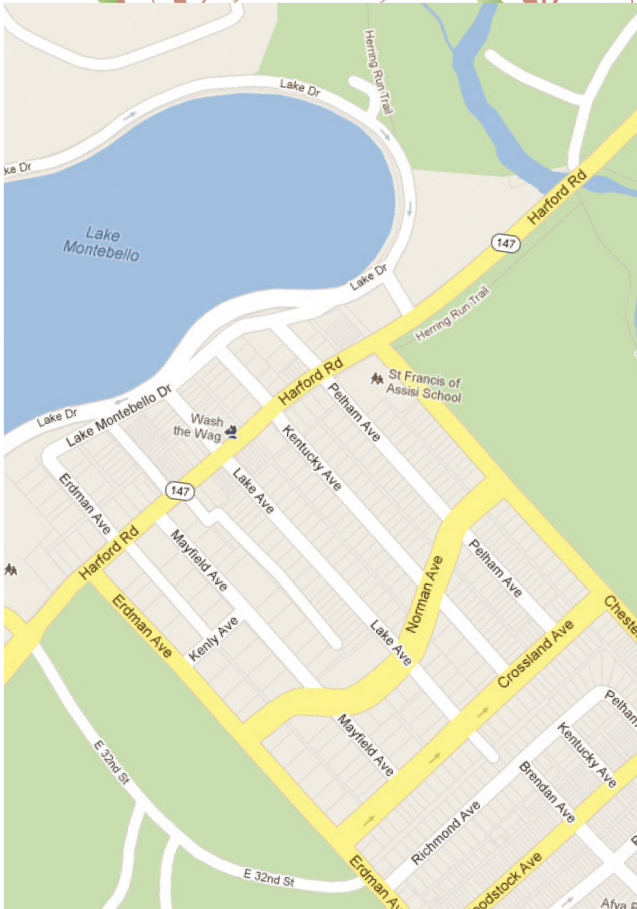


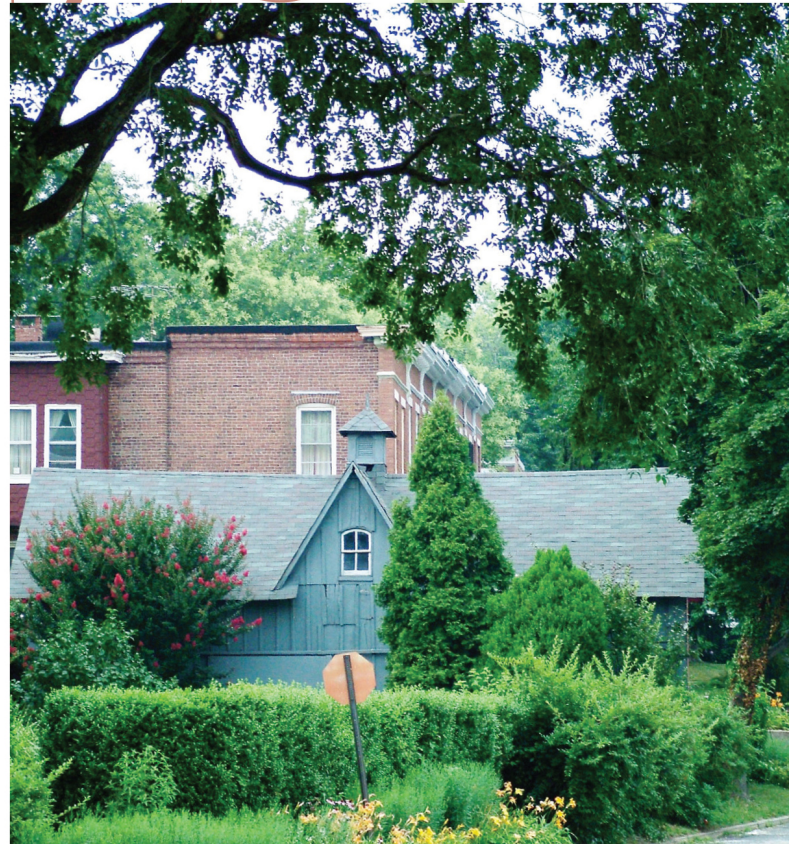
# WELCOME TO MAYFIELD



Mayfield is bordered on the south by Clifton Park and a municipal golf course, and to the north by Herring Run Park. Its western border is Lake Montebello. Main access roads to Mayfield are 33rd Street, Harford Road, and Erdman Avenue.

For more information about Mayfield, visit:  
[www.mayfieldassociation.org](http://www.mayfieldassociation.org)

Or contact:  
[mayfieldupdate@gmail.com](mailto:mayfieldupdate@gmail.com)



*"Sometimes it's hard to believe  
you're really in the city."*

— Jacques Kelly, Sunday Sun







## Rich in History

Mayfield is a residential community with a rich and colorful history. Having several homes dating from the Civil War, in its early years the neighborhood served as a summer retreat for many Baltimoreans. Residents have enjoyed and cherished this unique neighborhood ever since. Mayfield received its historic designation in the 1990s. While some homes were built over 100 years ago, most Mayfield homes date from the 1930s.

Mayfield prides itself in maintaining its beautiful, architecturally diverse homes and gardens. Building styles include Colonial, Victorian, and 1930's style single family homes, graceful Tudor and Colonial style duplexes, as well as row homes with white marble steps. Homes are built of stone, stucco, wood and brick and include unique exterior features. Most homes have spacious yet manageable landscaped lots

that provide privacy and comfort. Many have garages accessed by well maintained, clean alleys. Inside, homes contain details like hardwood inlaid floors, stained glass windows, and spacious rooms.

## A Hamlet in the Heart of Town

Enter Mayfield's broad, tree-lined streets and you're sure to see neighbors chatting in their yards. This family friendly neighborhood includes residents of all ages — among them lawyers, teachers, musicians, independent business owners, law enforcement personnel, city and state employees, artists, consultants and engineers. People in Mayfield know and care about their neighbors.

Despite its suburban feel, this urban neighborhood is just 10 minutes from the Inner Harbor, Fells Point, Canton, and Baltimore's art and theater districts in Mt. Vernon. This area is a prized location with schools,







churches, and shopping centers nearby. Johns Hopkins Hospital and Johns Hopkins University, two of the largest private employers in the City are both 10 minutes away. Likewise, Mayfield is a short drive to most of Baltimore's largest employers.

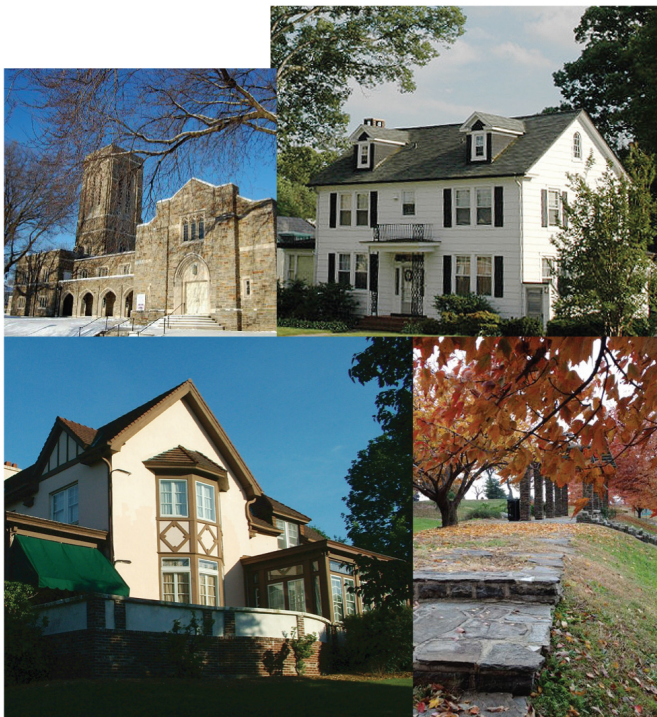
### **A Great Place to Live!**

The over 50 year old Mayfield Improvement Association continues to be vital, committed and involved in making Mayfield a great place to live. The Association sponsors various activities including:

- New Neighbor Welcome Party
- Community-wide Summer Block Party
- Spring Fling (dinner and silent auction) benefitting the local playground

- Quarterly Mayfield Newsletter
- Community news e-mail listserve/website/blog/Facebook
- Children's Events:  
Easter Egg Hunt, Halloween, Santa Event
- Annual Yard Sale
- Fall Fest
- Bulb planting, tree planting and neighborhood flower gardens
- Block Watch Program

The association provides leadership and a forum for addressing various neighborhood concerns. These include housing and zoning, maintenance of common areas, neighborhood improvements, safety, interface with city agencies and working to safeguard the surrounding park lands and to enhance the quality of life in Mayfield — helping to make Mayfield a great place to live!





## Why Choose Mayfield?

### CONVENIENCE

- An easy commute to Washington D.C. via car or train
- 25 Minutes from BWI
- 15 minutes from the Inner Harbor, Fells Point, Canton, and Baltimore's art and theater district
- 10 Minutes from I-95, I-895, and Pennsylvania Train Station; Johns Hopkins Hospital and Johns Hopkins University;
- 5 minutes from shopping, local eateries and galleries and the YMCA

### NEIGHBORHOOD AMENITIES

- A unique mix of architectural styles
- Mature tree plantings, beautiful azaleas and dogwood trees.
- Lake Montebello 1.3 mile walking and bike lanes
- Herring Run park walking and bike paths, nature trails, baseball diamonds
- Youth Sports Activities
- Clifton Park Golf Course
- Mother's Garden
- Community playground
- Home to Maryland State Boychoir
- Active Community Association.

### SCHOOLS

**Mayfield children attend many different schools, both public and private:**

- Zone School for K - grade 8 is Montebello Elementary and Middle School  
[www.baltimorecityschools.org/Domain/785](http://www.baltimorecityschools.org/Domain/785)

#### **9th -12th grades public school options include:**

- Baltimore City College  
[www.baltimorecitycollege.us](http://www.baltimorecitycollege.us)
- Baltimore Polytechnic Institute  
[www.bpi.edu](http://www.bpi.edu)
- Baltimore School for the Arts  
[www.bsfa.org](http://www.bsfa.org)
- Western High School  
[www.baltimorecityschools.org/407](http://www.baltimorecityschools.org/407)

#### **Other options include:**

- St. Francis of Assisi (PreK-8) located in Mayfield  
[www.sfa-school.org](http://www.sfa-school.org)
- City Neighbors Hamilton (Public Charter K-5 adding grades each year toward K-8)  
[www.cityneighborshamilton.org](http://www.cityneighborshamilton.org)
- Roland Park Elementary and Middle (K-8)  
[www.baltimorecityschools.org/Domain/2684](http://www.baltimorecityschools.org/Domain/2684)

#### **Archdiocese of Baltimore High Schools include:**

- Archbishop Curley High School (Boys 9-12)  
[www.archbishopcurley.org](http://www.archbishopcurley.org)
- Calvert Hall College High School (Boys 9-12)  
[www.calverthall.com](http://www.calverthall.com)
- Loyola Blakefield (Boys 9-12)  
[loyolablakefield.org](http://loyolablakefield.org)
- The Catholic High School (Girls 9-12)  
[www.thecatholichighschool.org](http://www.thecatholichighschool.org)
- The Institute of Notre Dame (Girls 9-12)  
[www.indofmd.org/podium/default.aspx?t=136680](http://www.indofmd.org/podium/default.aspx?t=136680)
- Notre Dame Prepatory (Girls 9-12)  
[www.notredameprep.co.m](http://www.notredameprep.co.m)

#### **Independent Schools that neighborhood children attend include:**

- Bryn Mawr (Girls K-12)  
[www.brynmawrschool.org](http://www.brynmawrschool.org)
- Friends  
[www.friendsbalt.org](http://www.friendsbalt.org)
- Gilman (Boys K-12)  
[www.gilman.edu](http://www.gilman.edu)
- GreenMount  
[www.greenmountschool.org](http://www.greenmountschool.org)
- Roland Park Country School (Girls K-12)  
[www.rpcs.org](http://www.rpcs.org)

Mayfield is also within a 10 mile radius of many colleges and universities.

### CHURCHES

- Bethel United Church of Christ
- Eden Korean United Methodist
- New Covenant Tabernacle
- St. Francis Of Assisi Roman Catholic
- St. Matthew's United Church of Christ